

<b>Site Name:</b>	<b>Plateau Mountain</b>
<b>Site Type:</b>	<b>Ecological Reserve</b>
<b>Status:</b>	Order-in-council (OC)
<b>Subtype:</b>	
<b>PA Site ID (Map Ref #):</b>	60
<b>O.C. No. (Land Ref. Manual):</b>	821/91
<b>Site # (Parks Website):</b>	407
<b>Reserved Area:</b>	0.00 ha. (0.00 ac.)
<b>Designated Area:</b>	2322.98 ha. (5740.08 ac.)
<b>Total Area:</b>	2322.98 ha. (5740.08 ac.)
<b>Additional Protected Areas:</b>	none
<b>Lat/Long Co-ordinates:</b>	sw Sec.5, Twp.15, Rge.4, W5; 50 12'00" N, 114 30'60" W
<b>Natural Region:</b>	Rocky Mountain
<b>Natural Subregion(s):</b>	Alpine; Subalpine
<b>IUCN Classification:</b>	IA
<b>Operated By:</b>	Parks Division
<b>Info Phone:</b>	403-678-5500
<b>Steward(s) Aug2002:</b>	Volunteer(s) 1
<b>Steward(s) Aug2003:</b>	Volunteer(s) 1
<b>Steward(s) Dec2011:</b>	yes

**Petroleum & Natural Gas Surface**

<b>Access Aug2002:</b>	No Surface Access
<b>Day Use Site(s):</b>	Plateau Mountain
<b>Recreation Activities:</b>	Hiking - backcountry

**Access:** No public roads in the reserve; existing road to mountain top is leased by Husky Oil; to prevent vandalism to natural gas production facilities and to lessen impact on the area's natural features, access is controlled by a locked gate; travel in the reserve is by foot only  
<http://www.albertaparks.ca/siteinformation.aspx?id=406>.

**Notes:** The Plateau Mountain Ecological Reserve consists of a nearly flat high-elevation plateau. The reserve is internationally recognized for its ice cave, which contains ice crystals, curls, sheets and pillars. The ice crystals are so fragile that a temperature increase of one-degree Celsius can cause melting. A range of periglacial features known as "patterned ground" are found on Plateau Mountain and include active permafrost, sorted stone circles, polygons, steps and frost boils; the area also contains critical winter range for bighorn sheep (Alberta Parks web site, 2012).

The Plateau Mountain Ecological Reserve management plan is available at [http://www.albertaparks.ca/media/2741526/plateau\\_mtn\\_mgmt\\_plan.pdf](http://www.albertaparks.ca/media/2741526/plateau_mtn_mgmt_plan.pdf).

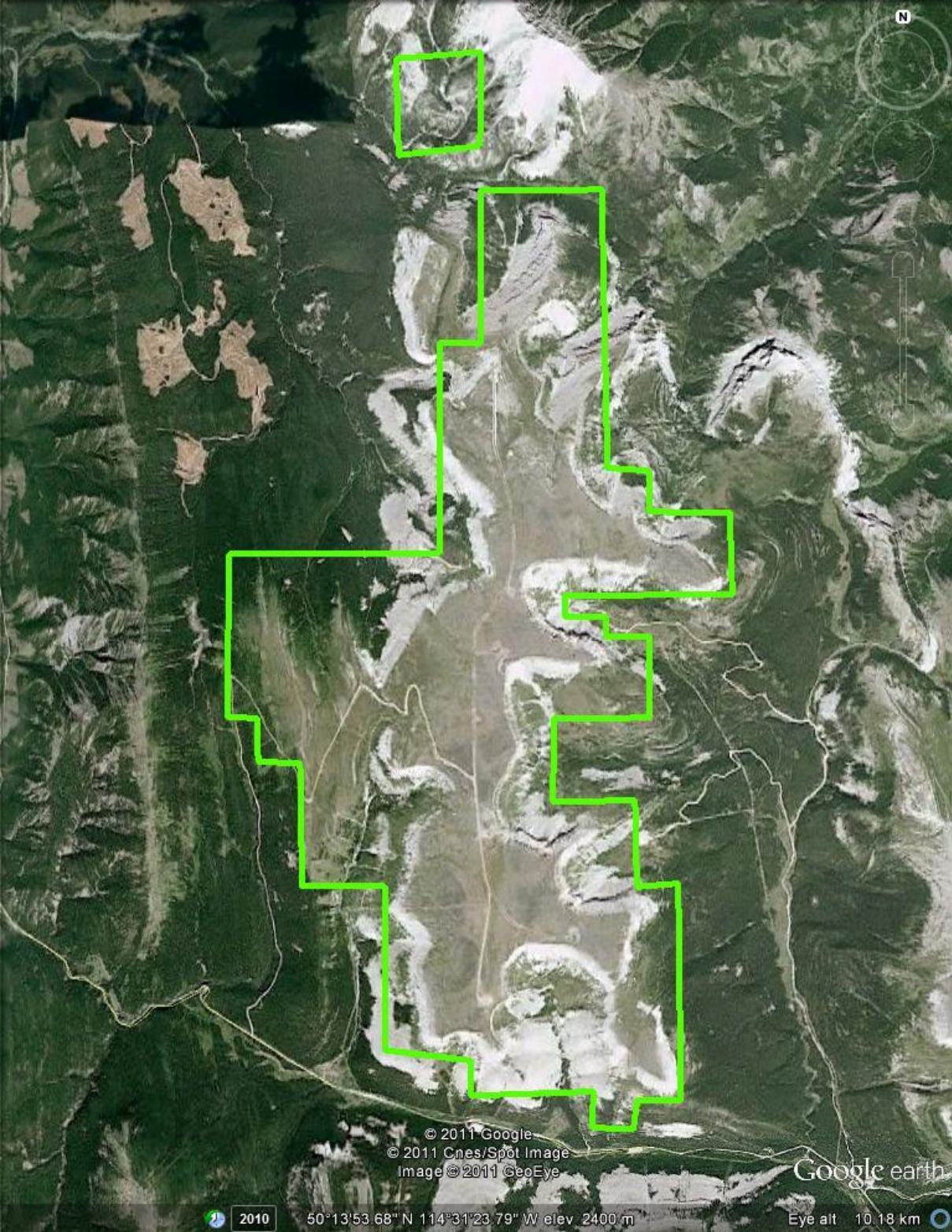
Images:



Alberta Parks website



Fossil ice wedges - photo L. Kershaw



© 2011 Google  
© 2011 Cnes/Spot Image  
Image © 2011 GeoEye

Google earth

2010 50°13'53.68" N 114°31'23.79" W elev 2400 m Eye alt 10.18 km

