

Site Name: **Whitemud Falls**

Site Type: **Ecological Reserve**

Status: Order-in-council (OC)

Subtype:

PA Site ID (Map Ref #): 489

O.C. No. (Land Ref. Manual): 616/88

Site # (Parks Website): 414

Reserved Area: 0.00 ha. (0.00 ac.)

Designated Area: 864.84 ha. (2137.03 ac.)

Total Area: 864.84 ha. (2137.03 ac.)

Additional Protected Areas: none

Lat/Long Co-ordinates: 56.7050751532 N, -110.085223789 W

Natural Region: Boreal

Natural Subregion(s): Central Mixedwood

IUCN Classification: IA

Operated By: Parks Division

Info Phone: 780-743-7437

Steward(s) Aug2002: Not Available

Steward(s) Aug2003: Not Available

Steward(s) Dec2011: no

Petroleum & Natural Gas Surface

Access Aug2002: No Surface Access

Day Use Site(s): Whitemud Falls

Recreation Activities: Canoeing/kayaking, Hiking - backcountry

Access: There are no public roads in the reserve; access to the reserve is available by jet boat, canoe & (in suitable locations on the river) by float plane; travel within the reserve is by foot only.

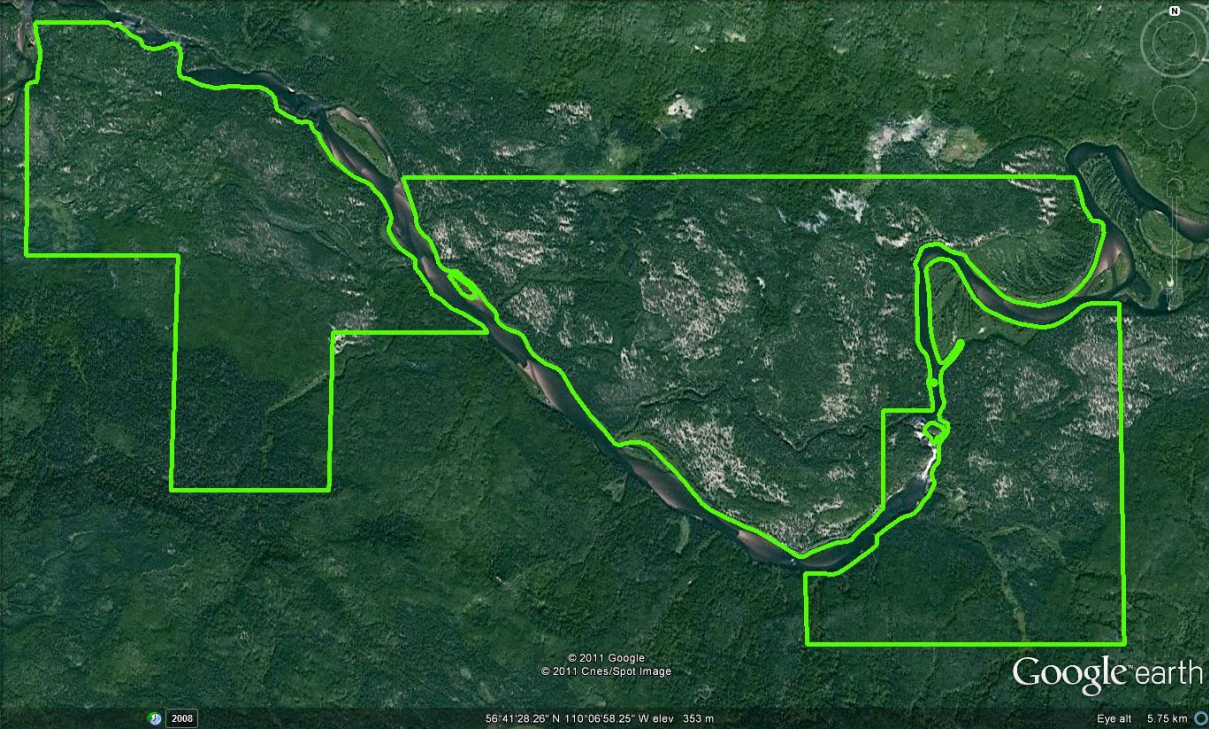
Notes: Whitemud Falls Wildland Park, Whitemud Falls Ecological Reserve and Saskatchewan's Clearwater River Provincial Park occupy a steep sided and deeply incised stretch of the Clearwater River valley. Here the river has eroded the underlying Devonian limestone and dolomites, creating the falls and a variety of karst features such as stacks (or "flowerpots"; rare in Alberta east of the Rockies), gullies, fissures and caves. Cold mineral springs with high salt content supply water to wetlands east of the falls. More than 20 rare, uncommon and disjunctive plant species have been recorded within the karst habitats of this area. Jack pine and aspen-dominated forests are the dominant vegetation in the ecological reserve; over 130 bird, 4 bat, 14 furbearer, 6 carnivore, 3 ungulate, 3 amphibian & 1 snake species are found in the area; rare plant species in the area include green spleenwort, purple cliff brake & Robert's fern (Alberta Parks web site, 2012).

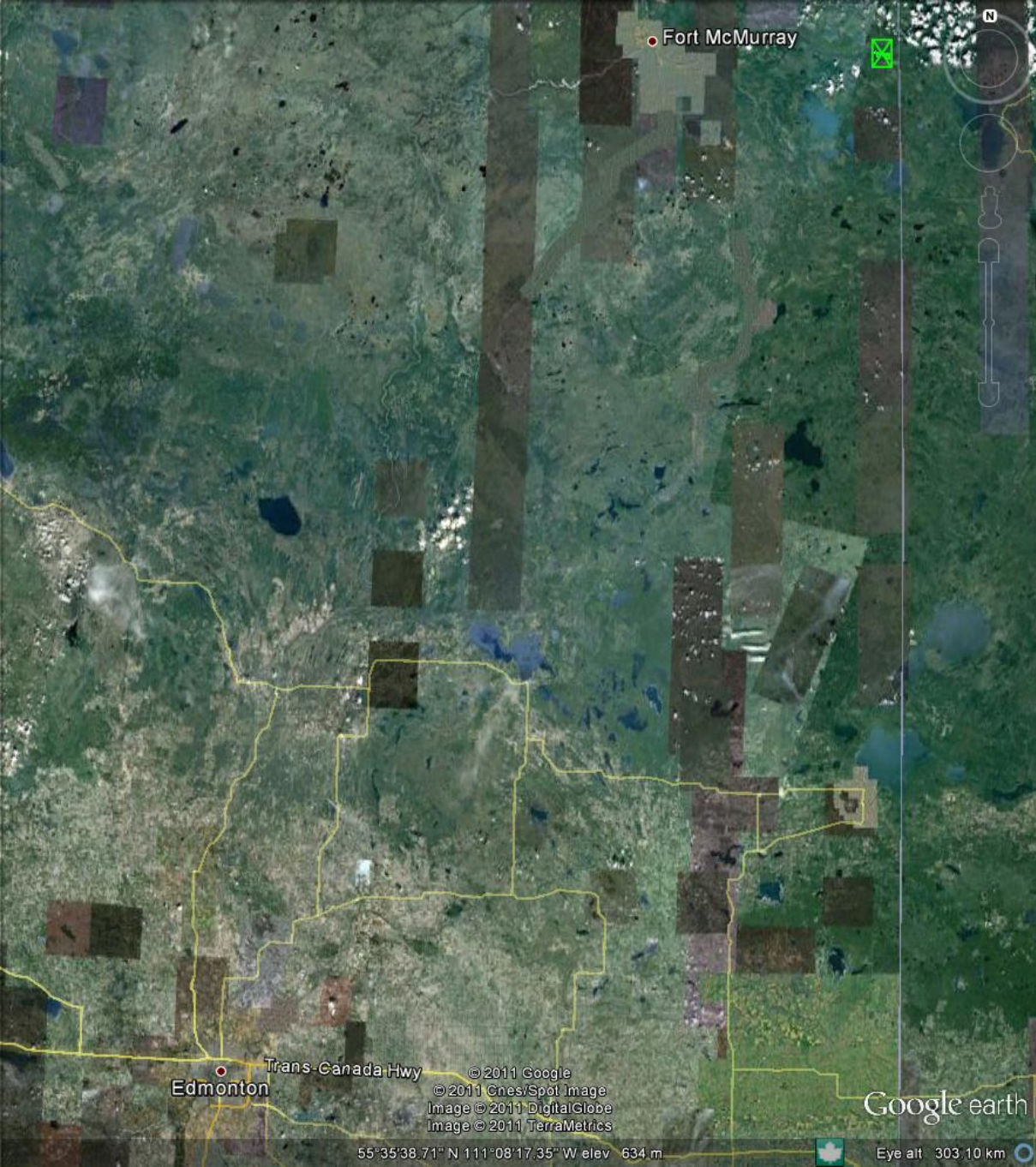
The Clearwater River from the Alberta-Saskatchewan border west to Ft. McMurray was designated a Canadian Heritage River in April 2004 (Alberta Parks web site, 2012).

Images:



Alberta Parks website





Edmonton

Trans-Canada Hwy

Fort McMurray

Google earth

55°35'38.71" N 111°08'17.35" W elev 634 m

Eye alt 303.10 km

© 2011 Google
© 2011 Cnes/Spot image
Image © 2011 DigitalGlobe
Image © 2011 TerraMetrics