

<b>Site Name:</b>	<b>Prairie Coulees</b>
<b>Site Type:</b>	<b>Natural Area</b>
<b>Status:</b>	Order-in-council (OC)
<b>Subtype:</b>	Conservation
<b>PASite ID (Map Ref #):</b>	578
<b>O.C. No. (Land Ref. Manual):</b>	49/97
<b>Site # (Parks Website):</b>	507
<b>Reserved Area:</b>	0.00 ha. (0.00 ac.)
<b>Designated Area:</b>	1787.53 ha. (4416.98 ac.)
<b>Total Area:</b>	1787.53 ha. (4416.98 ac.)
<b>Additional Protected Areas:</b>	none
<b>Lat/Long Co-ordinates:</b>	50.4283396278 N, -110.391927849 W
<b>Natural Region:</b>	Grassland
<b>Natural Subregion(s):</b>	Dry Mixedgrass
<b>2nd Natural Region:</b>	
<b>2nd Natural Subregion(s):</b>	
<b>IUCN Classification:</b>	VI
<b>Operated By:</b>	Parks Division
<b>Info Phone:</b>	403-528-5228
<b>Steward(s) Aug2002:</b>	Not Available
<b>Steward(s) Aug2003:</b>	Not Available
<b>Steward(s) Dec2011:</b>	no
<b>Petroleum &amp; Natural Gas Surface Access Aug2002:</b>	Conditional
<b>Day Use Site(s):</b>	Prairie Coulees
<b>Recreation Activities:</b>	none noted

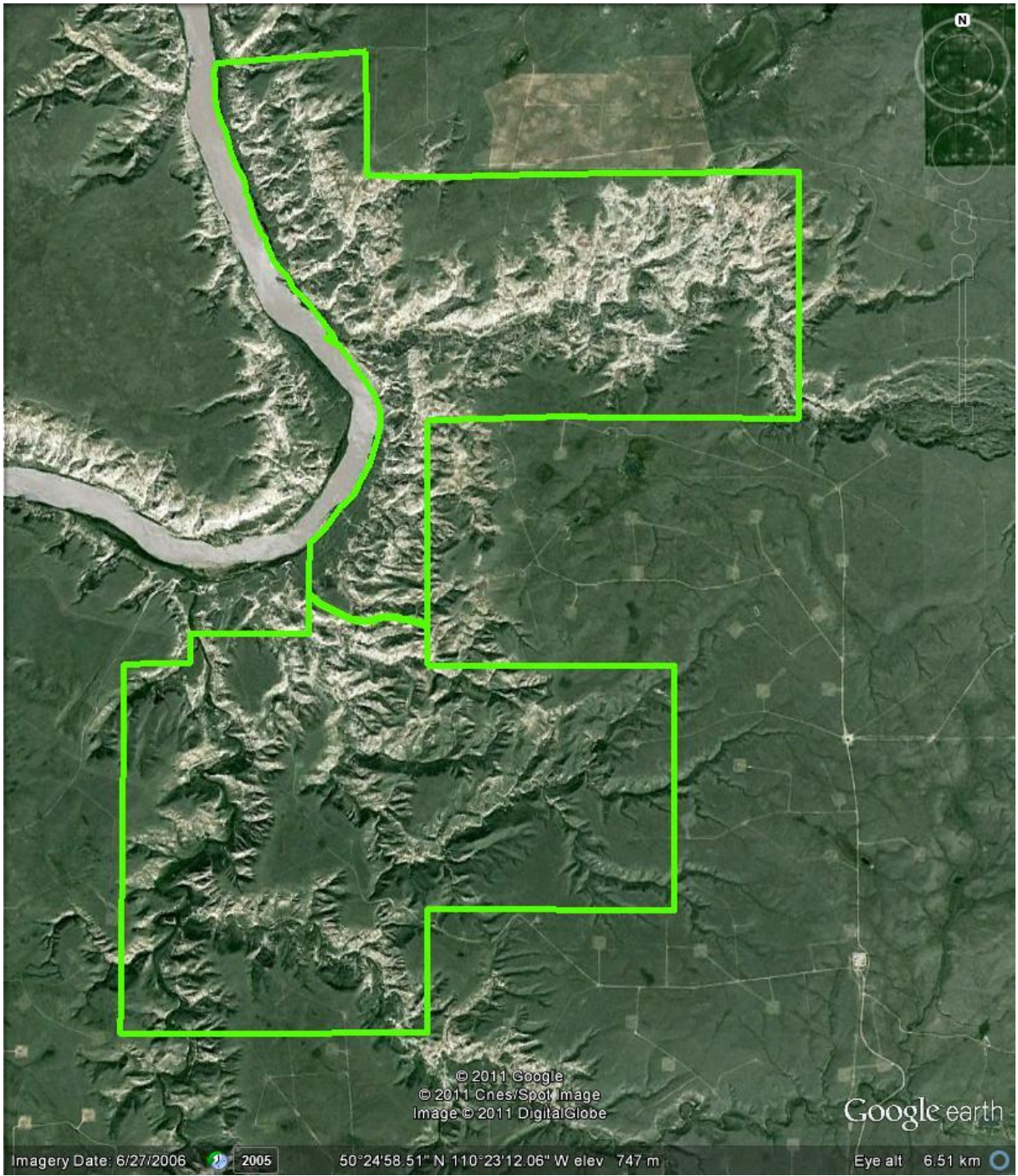
**Access:**

**Notes:** Prairie Coulees Natural Area (44.17 km<sup>2</sup>), north of Medicine Hat, encompasses several incised valleys draining into the South Saskatchewan River valley, with classic badlands features in spectacular coulee and valley landscapes. It includes a number of springs and associated plant communities that are under-represented in the parks and protected areas network. Several rare plants have been found here and the site provides good habitat for many animals including golden eagle and other large birds of prey.

This Natural Area lies in the Grassland Natural Region, Dry Mixedgrass Sub-region. With the exception of glacial lakebed and marshes, most of the landscapes that make up the Dry Mixedgrass Sub-region are moderately well represented in the parks and protected areas network, with about 50% of the preservation targets having been achieved to date. The site was established or expanded as part of the Special Places program (Alberta Parks web site, 2012).

Images:





© 2011 Google  
© 2011 Cnes/Spot Image  
Image © 2011 DigitalGlobe

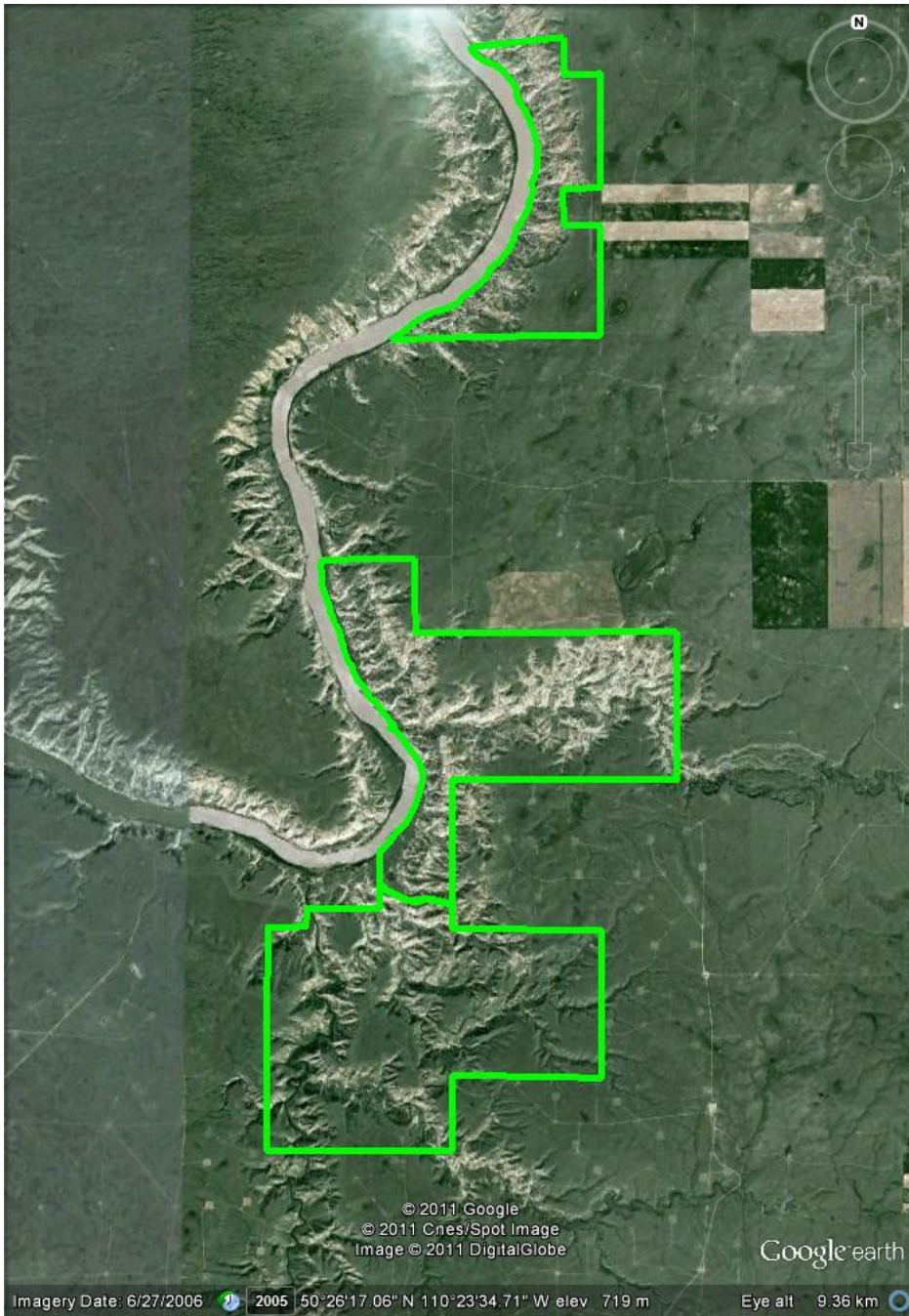
Google earth

Imagery Date: 6/27/2006

2005

50°24'58.51" N 110°23'12.06" W elev 747 m

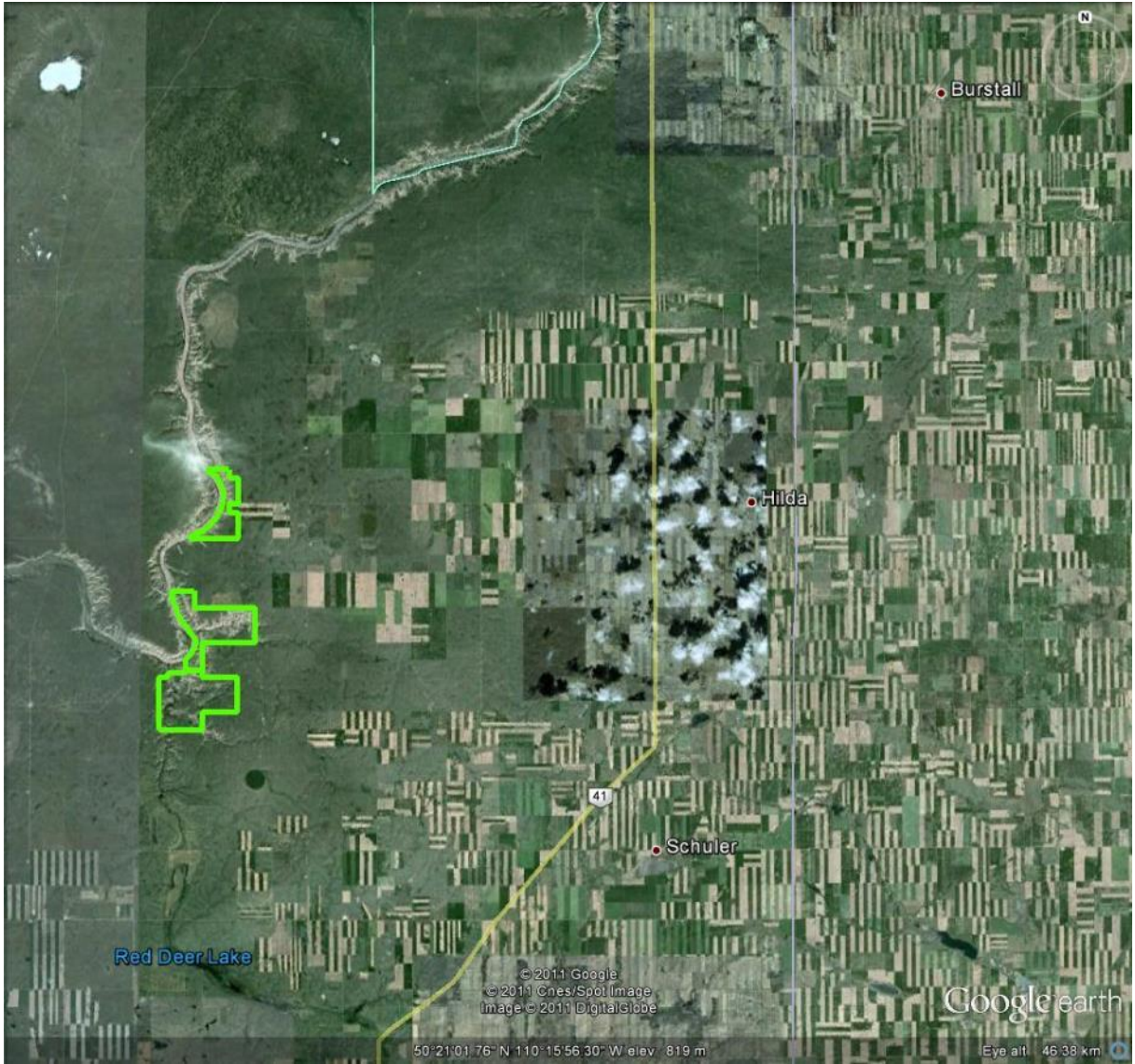
Eye alt 6.51 km

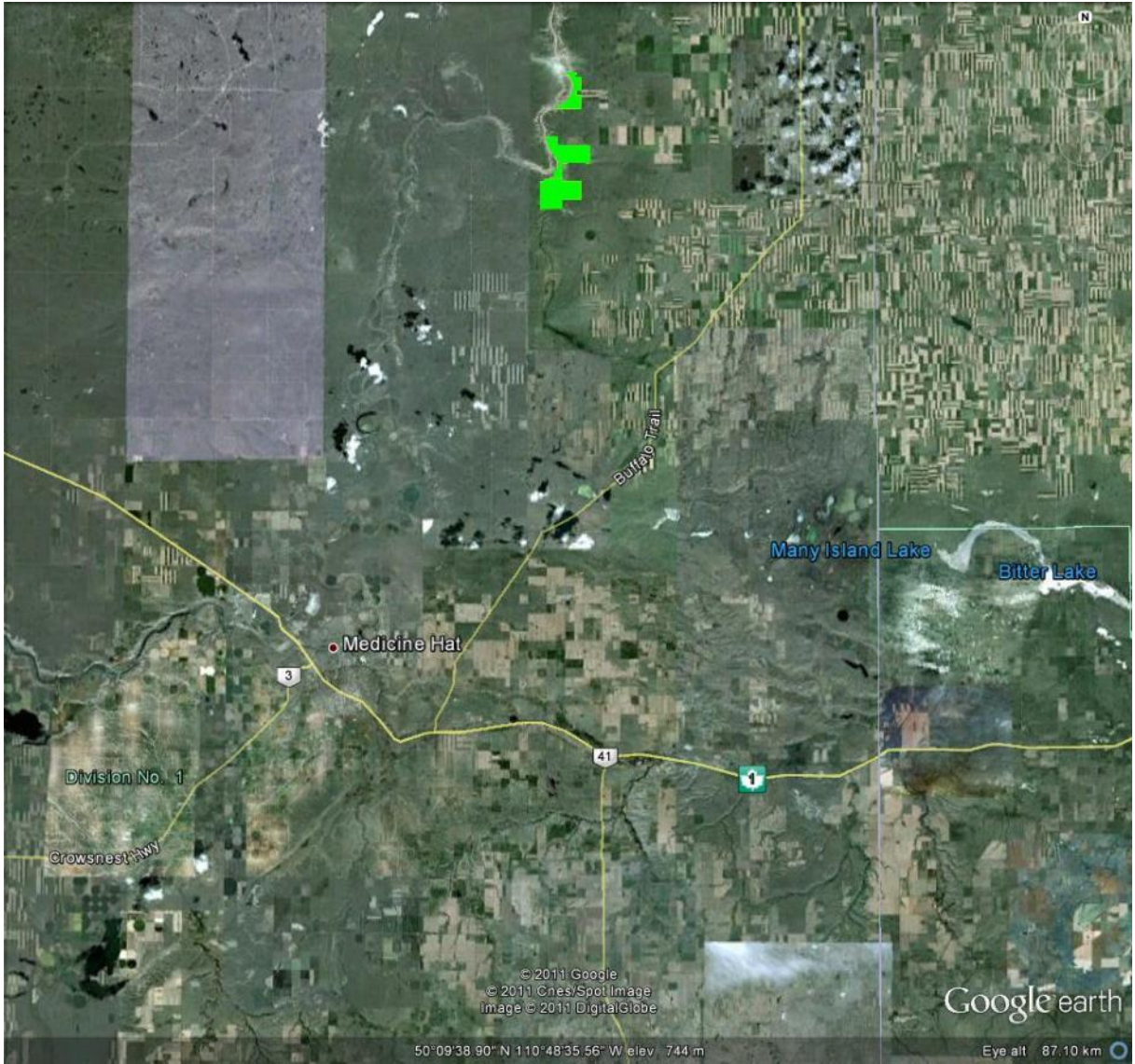


© 2011 Google  
© 2011 Cnes/Spot Image  
Image © 2011 DigitalGlobe

Google earth

Imagery Date: 6/27/2006 2005 50°26'17.06" N 110°23'34.71" W elev 719 m Eye alt 9.36 km







Calgary

Trans-Canada Hwy

Veteran's Memorial Hwy

Crow'snest Hwy

© 2011 Google  
© 2011 Cress/Spot Image  
Image © 2011 DigitalGlobe  
Image © 2011 GeoEye

50°26'43.75" N 113°16'45.02" W elev. 1002 m

Google earth

Eye alt: 279.66 km