

Site Name: **Big Sagebrush**

Site Type: **Natural Area**

Status: Protective Notation (PNT)

Subtype: TPR - Conservation

PASite ID (Map Ref #): 424

O.C. No. (Land Ref. Manual): N/A

Site # (Parks Website): N/A

Reserved Area: 540.00 ha. (1334.34 ac.)

Designated Area: 0.00 ha. (0.00 ac.)

Total Area: 540.00 ha. (1334.34 ac.)

Additional Protected Areas: none

Lat/Long Co-ordinates: 49 18.96 N, 114 17.02 W

Natural Region: Rocky Mountain

Natural Subregion(s): Alpine; Subalpine; Montane

IUCN Classification:

Operated By:

Info Phone:

Steward(s) Aug2002: Volunteer(s) 2+

Steward(s) Aug2003: Volunteer(s) 2+

Steward(s) Dec2011: yes

Petroleum & Natural Gas Surface

Access Aug2002: No Surface Access

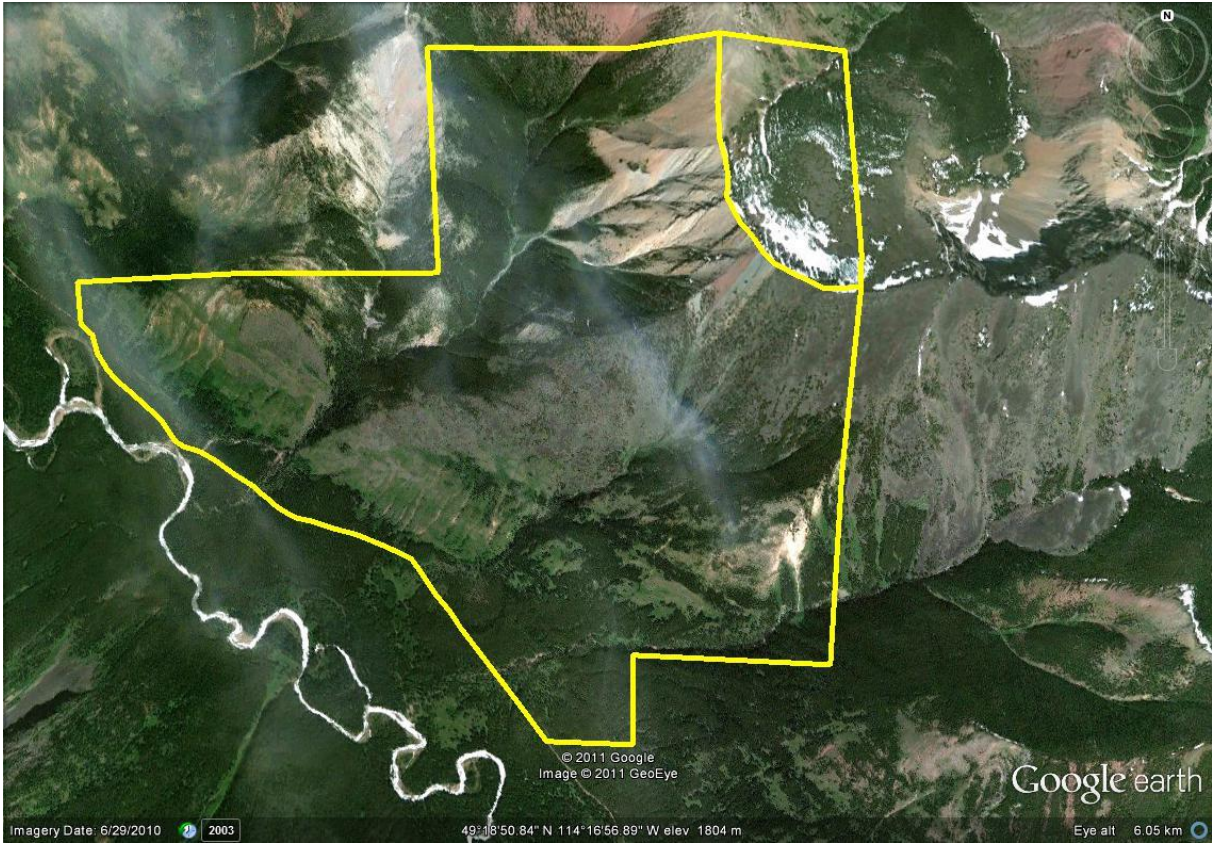
Day Use Site(s):

Recreation Activities:

Access:

Notes: The Alberta Native Plant Council has posted more info about this site on their website http://www.anpc.ab.ca/content/big_sagebrush.php.

Images:





• Bellevue

• Lundbreck

• Burmis

• Beaver Mines

© 2011 Google
Image © 2011 GeoEye
Image © 2011 DigitalGlobe

Google earth

Imagery Date: 6/29/2010

49°26'45.93" N 114°12'19.50" W elev 1348 m

Eye alt 23.82 km

