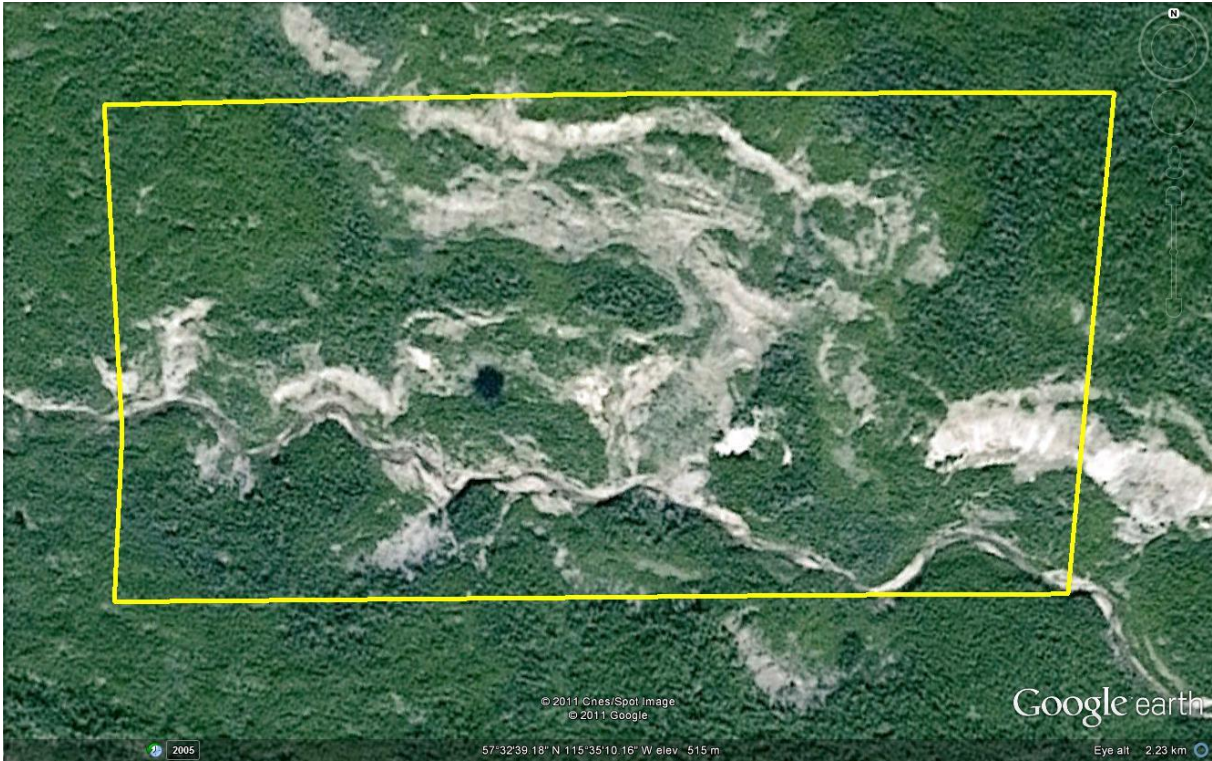


<b>Site Name:</b>	<b>Burning Sulphur</b>
<b>Site Type:</b>	<b>Natural Area</b>
<b>Status:</b>	Protective Notation (PNT)
<b>Subtype:</b>	SRD - Conservation
<b>PASite ID (Map Ref #):</b>	548
<b>O.C. No. (Land Ref. Manual):</b>	N/A
<b>Site # (Parks Website):</b>	N/A
<b>Reserved Area:</b>	130.00 ha. (321.23 ac.)
<b>Designated Area:</b>	0.00 ha. (0.00 ac.)
<b>Total Area:</b>	130.00 ha. (321.23 ac.)
<b>Additional Protected Areas:</b>	none
<b>Lat/Long Co-ordinates:</b>	57 32.67 N, 115 35.16 W
<b>Natural Region:</b>	Boreal
<b>Natural Subregion(s):</b>	Central Mixedwood; Lower Boreal Highlands
<b>IUCN Classification:</b>	
<b>Operated By:</b>	
<b>Info Phone:</b>	
<b>Steward(s) Aug2002:</b>	Not Available
<b>Steward(s) Aug2003:</b>	Not Available
<b>Steward(s) Dec2011:</b>	no
<b>Petroleum &amp; Natural Gas Surface Access Aug2002:</b>	No Surface Access
<b>Day Use Site(s):</b>	
<b>Recreation Activities:</b>	
<b>Access:</b>	
<b>Notes:</b>	

Images:





Lesser Slave Lake

Image © 2011 TerraMetrics  
© 2011 Cnes/Spot Image  
© 2011 Google  
Image © 2011 DigitalGlobe

Google earth

56°20'59.12" N 115°13'18.38" W elev 600 m

Eye alt 202.91 km