

Site Name: **Landslide Lake**

Site Type: **Natural Area**

Status: Protective Notation (PNT)

Subtype: TPR - Recreation

PA Site ID (Map Ref #): 389

O.C. No. (Land Ref. Manual): N/A

Site # (Parks Website): N/A

Reserved Area: 712.25 ha. (1759.96 ac.)

Designated Area: 0.00 ha. (0.00 ac.)

Total Area: 712.25 ha. (1759.96 ac.)

Additional Protected Areas: none

Lat/Long Co-ordinates: 52 04.42 N, 116 32.47 W

Natural Region: Rocky Mountain

Natural Subregion(s): Alpine; Subalpine

IUCN Classification:

Operated By:

Info Phone:

Steward(s) Aug2002: Volunteer(s) 1

Steward(s) Aug2003: Volunteer(s) 1

Steward(s) Dec2011: yes

**Petroleum & Natural Gas Surface
Access Aug2002:** No Surface Access

Day Use Site(s):

Recreation Activities:

Access:

Notes:

Images:

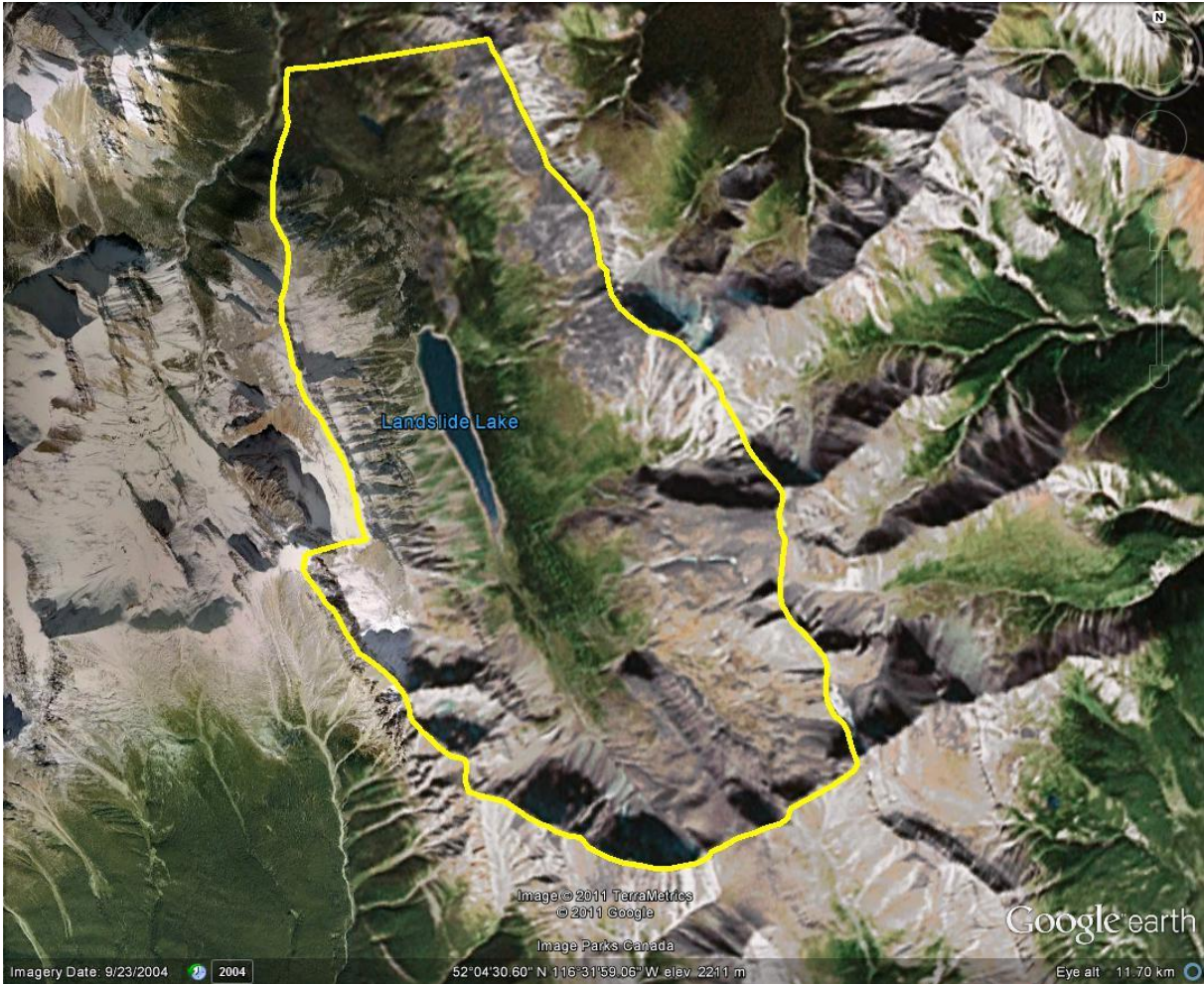




Image © 2011 TerraMetrics
© 2011 Google
© 2011 Cnes/Spot Image
Image Parks Canada

Google Earth

Imagery Date: 9/23/2004

52°01'28.36" N 116°33'14.87" W elev. 1621 m

Eye alt: 50.55 km

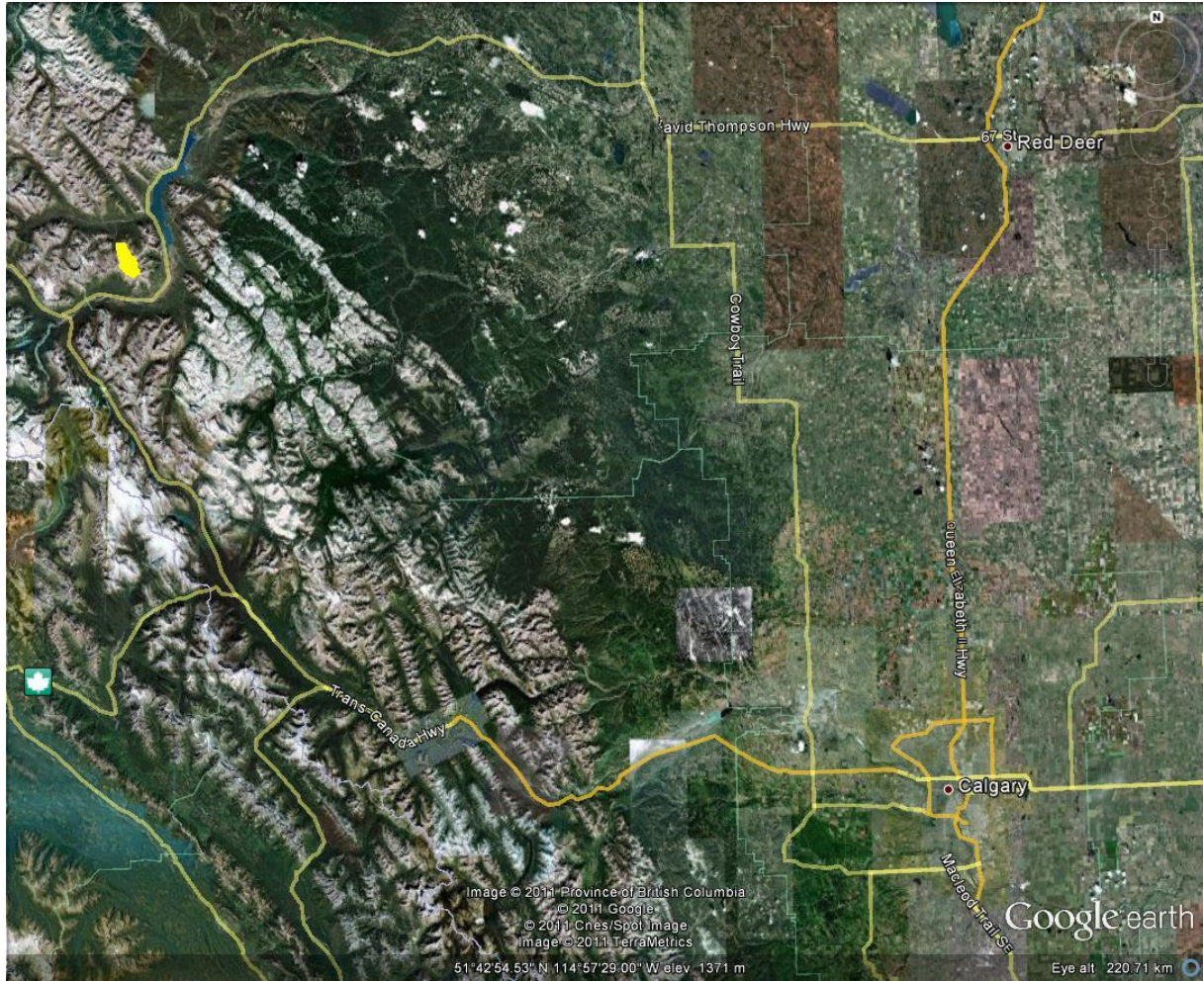


Image © 2011 Province of British Columbia
© 2011 Google
© 2011 Cnes/Spot Image
Image © 2011 TerraMetrics
51°42'54.53" N 114°57'29.00" W elev. 1371 m

Google earth
Eye alt 220.71 km