

**Site Name:** **Macabee Creek**

**Site Type:** **Natural Area**

**Status:** Protective Notation (PNT)

**Subtype:** TPR - Education

**PASite ID (Map Ref #):** 444

**O.C. No. (Land Ref. Manual):** N/A

**Site # (Parks Website):** N/A

**Reserved Area:** 518.00 ha. (1279.98 ac.)

**Designated Area:** 0.00 ha. (0.00 ac.)

**Total Area:** 518.00 ha. (1279.98 ac.)

**Additional Protected Areas:** none

**Lat/Long Co-ordinates:** 50 39.59 N, 114 28.43 W

**Natural Region:** Rocky Mountain

**Natural Subregion(s):** Montane

**IUCN Classification:**

**Operated By:**

**Info Phone:**

**Steward(s) Aug2002:** Volunteer(s) 2

**Steward(s) Aug2003:** Volunteer(s) 3

**Steward(s) Dec2011:** yes

**Petroleum & Natural Gas Surface  
Access Aug2002:** No Surface Access

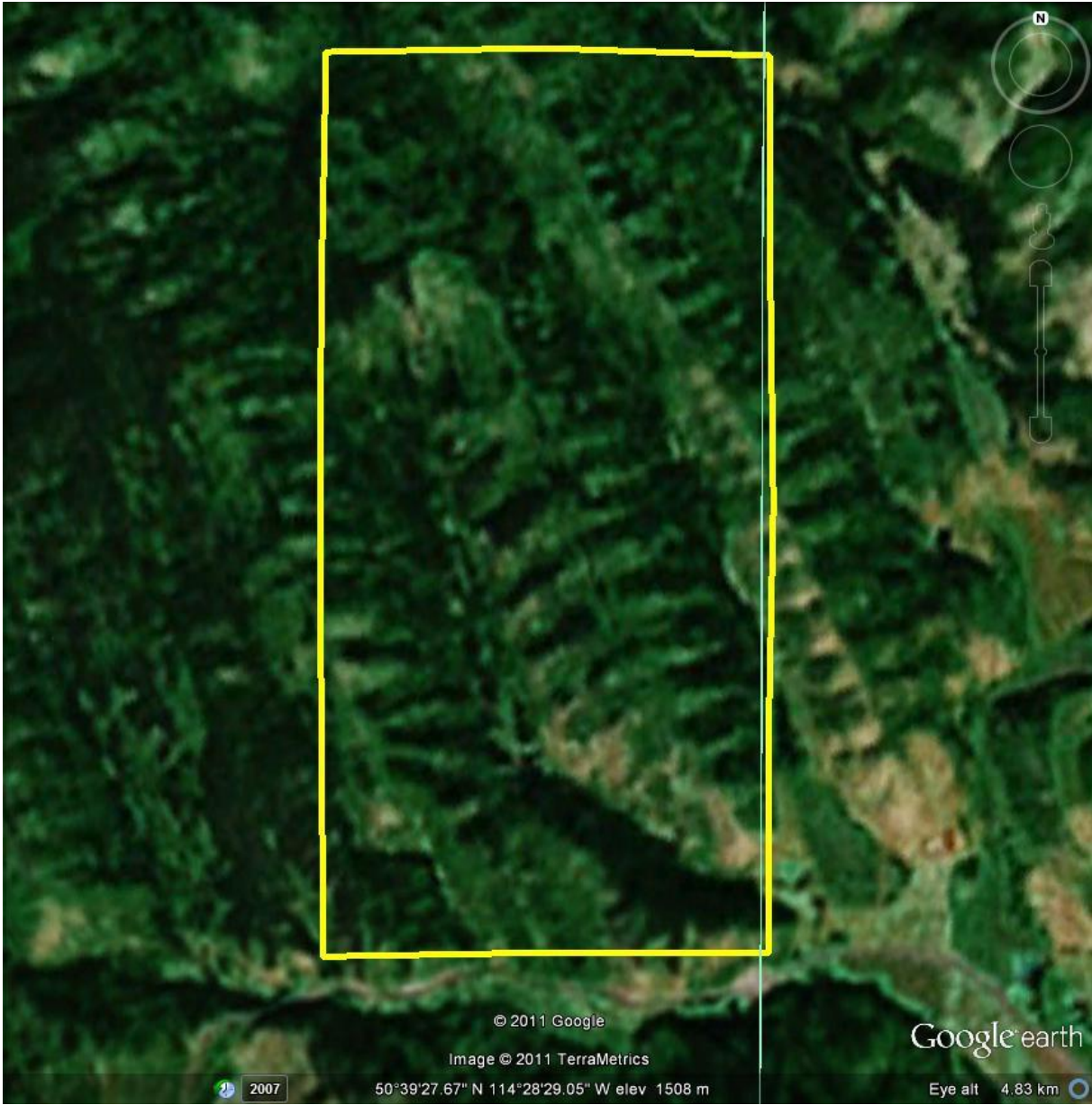
**Day Use Site(s):**

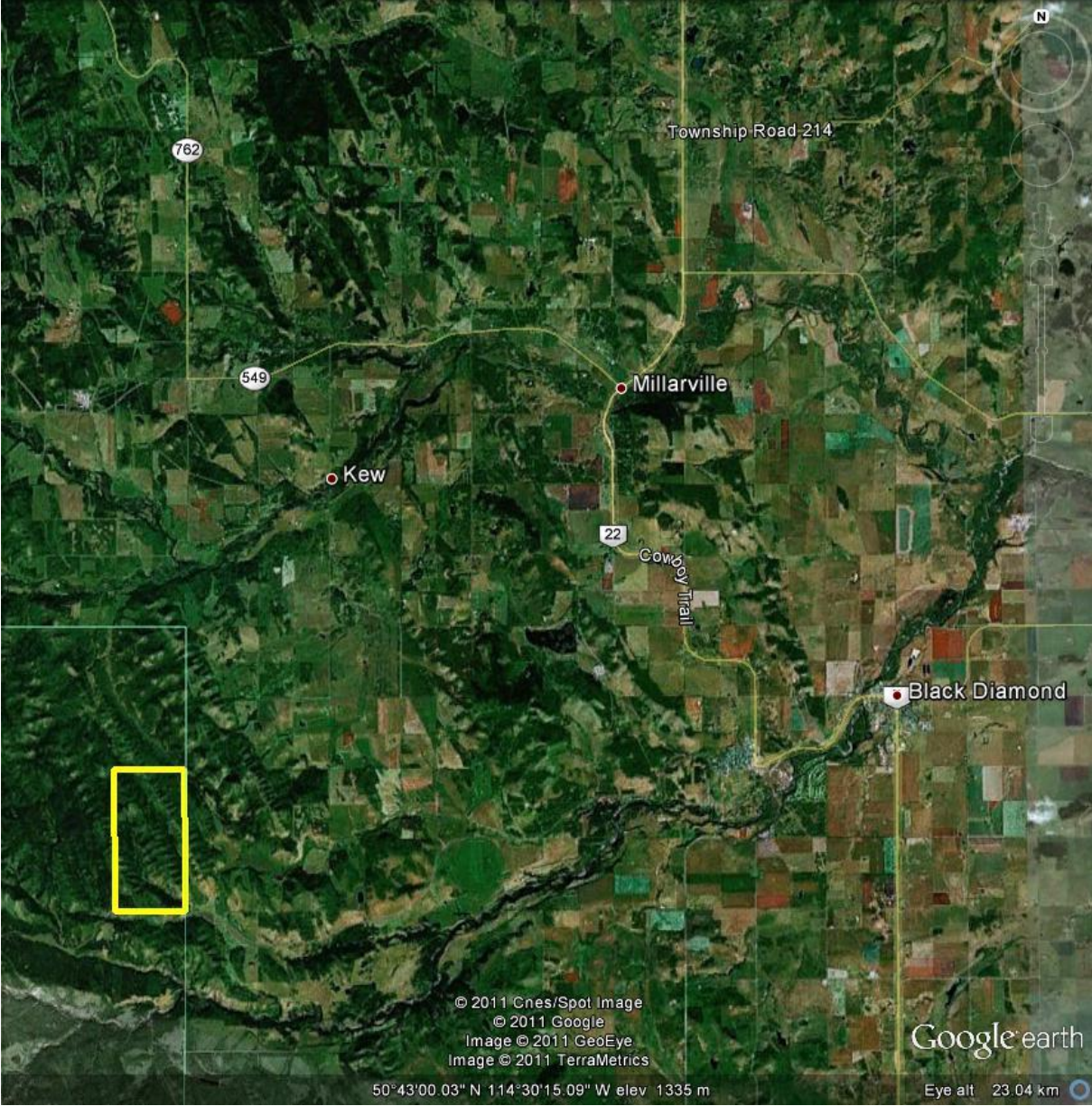
**Recreation Activities:**

**Access:**

**Notes:** not on parks map

Images:





© 2011 Cnes/Spot Image  
© 2011 Google  
Image © 2011 GeoEye  
Image © 2011 TerraMetrics

Google earth

50°43'00.03" N 114°30'15.09" W elev 1335 m

Eye alt 23.04 km

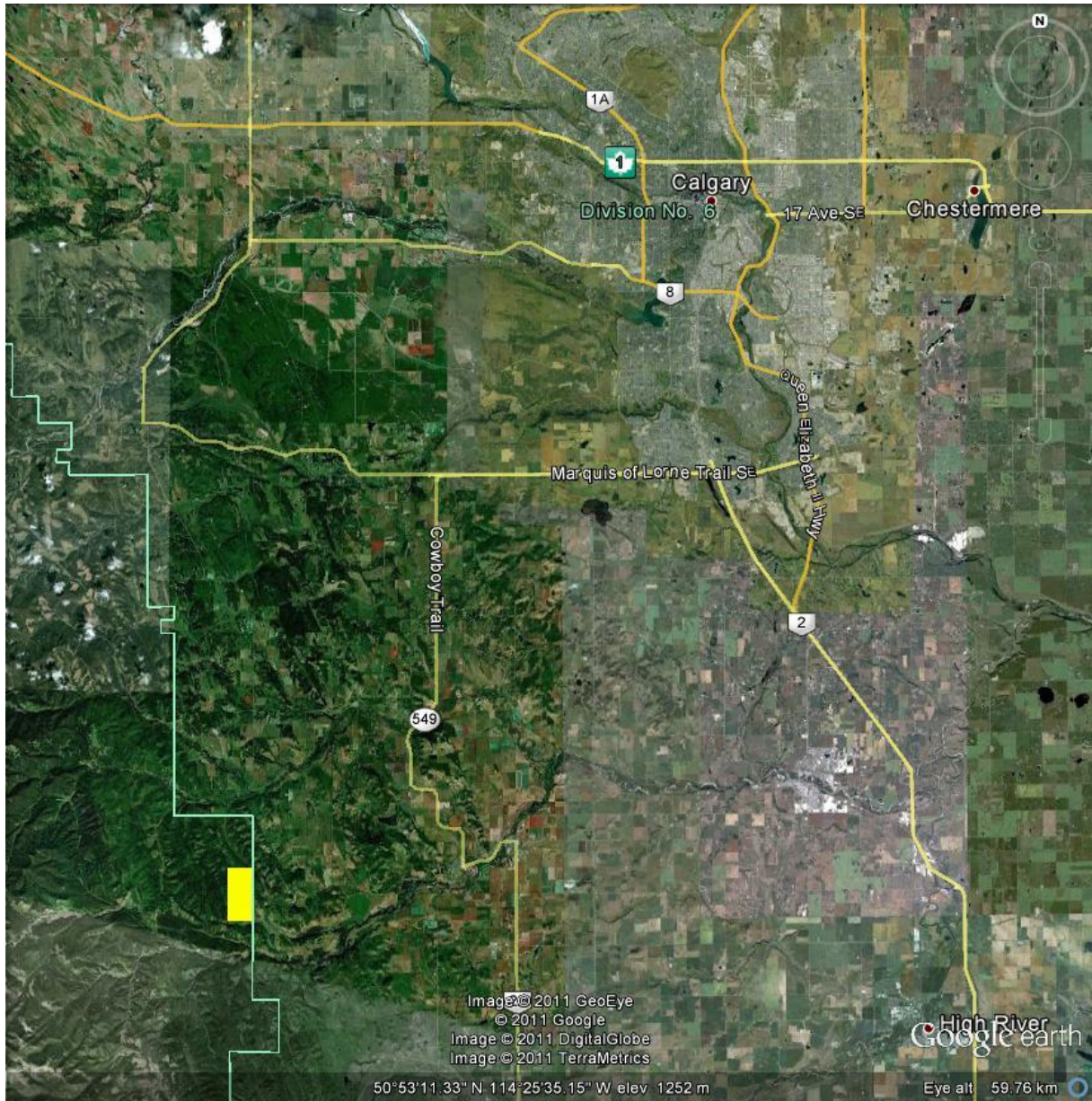


Image © 2011 GeoEye  
© 2011 Google  
Image © 2011 DigitalGlobe  
Image © 2011 TerraMetrics

High River  
Google earth

50°53'11.33" N 114°25'35.15" W elev 1252 m

Eye alt 59.76 km