

Site Name: **Whitecourt**

Site Type: **Natural Area**

Status: Protective Notation (PNT)

Subtype: TPR - Education

PA Site ID (Map Ref #): 232

O.C. No. (Land Ref. Manual): N/A

Site # (Parks Website): N/A

Reserved Area: 21.00 ha. (51.89 ac.)

Designated Area: 0.00 ha. (0.00 ac.)

Total Area: 21.00 ha. (51.89 ac.)

Additional Protected Areas: none

Lat/Long Co-ordinates: 54 05.20 N, 115 37.58 W

Natural Region: Boreal

Natural Subregion(s): Central Mixedwood

IUCN Classification:

Operated By:

Info Phone:

Steward(s) Aug2002: Volunteer(s) 1

Steward(s) Aug2003: Volunteer(s) 1

Steward(s) Dec2011: yes

Petroleum & Natural Gas Surface Access Aug2002: Conditional

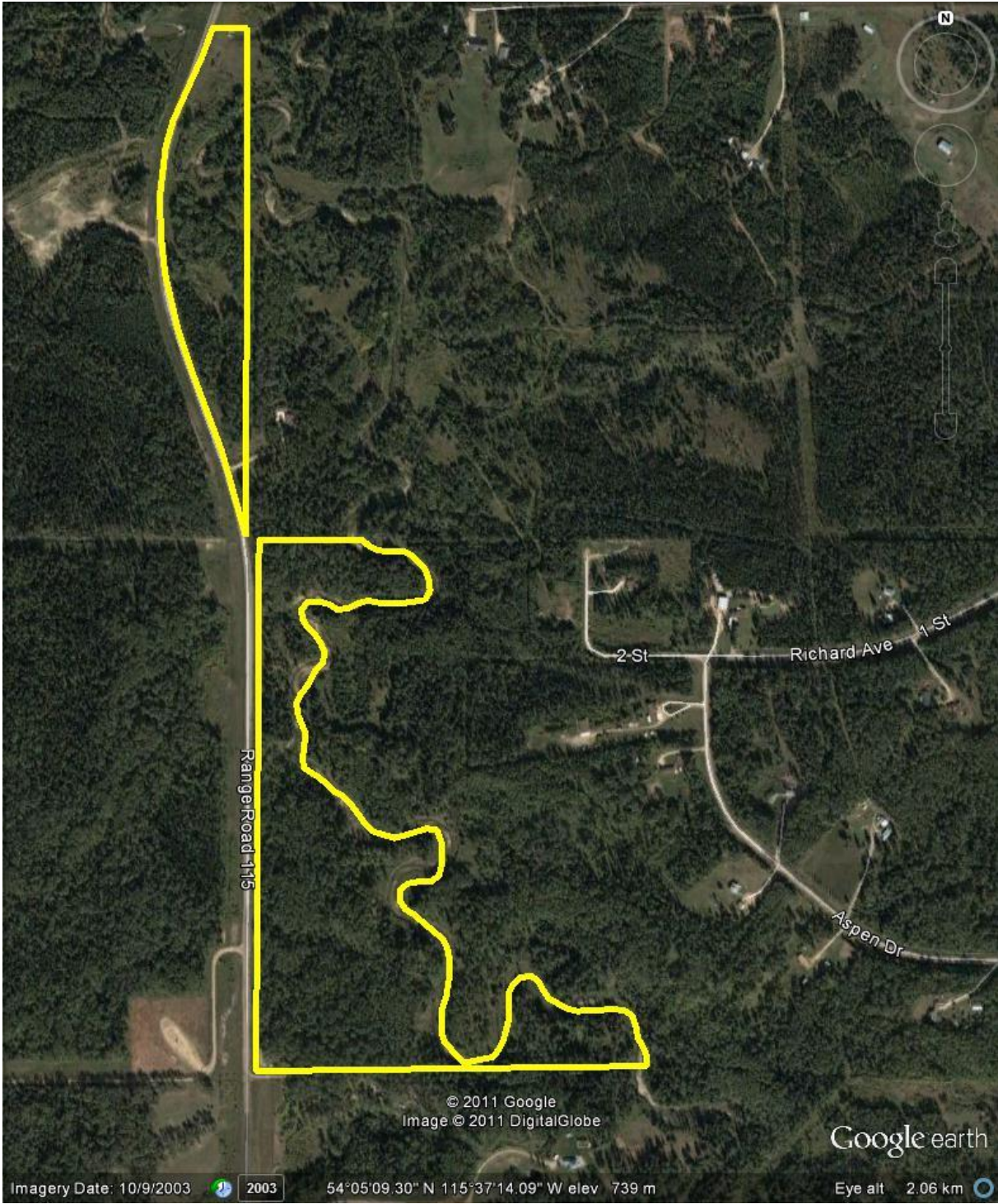
Day Use Site(s):

Recreation Activities:

Access:

Notes:

Images:





Whitecourt

32

43

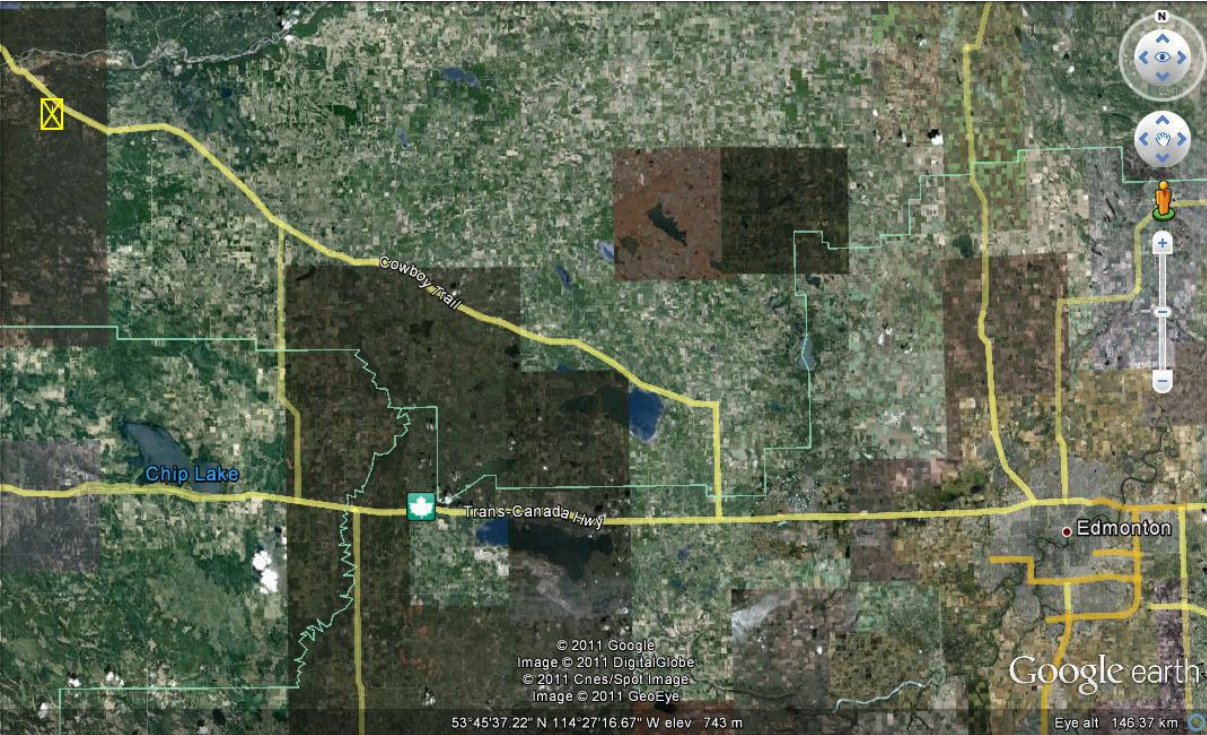
© 2011 Google
Image © 2011 DigitalGlobe
© 2011 Cnes/Spot Image

Google earth

Imagery Date: 10/9/2003 2003

54°07'46.05" N 115°39'07.24" W elev 715 m

Eye alt 14.02 km



© 2011 Google
Image © 2011 DigitalGlobe
© 2011 Cnes/Spot Image
Image © 2011 GeoEye

Google earth

53°45'37.22" N 114°27'16.67" W elev 743 m

Eye alt 146.37 km