

SAPAA, the North Saskatchewan & WAERNAHR

2026-06-07 -
Ukrainian Cultural Centre

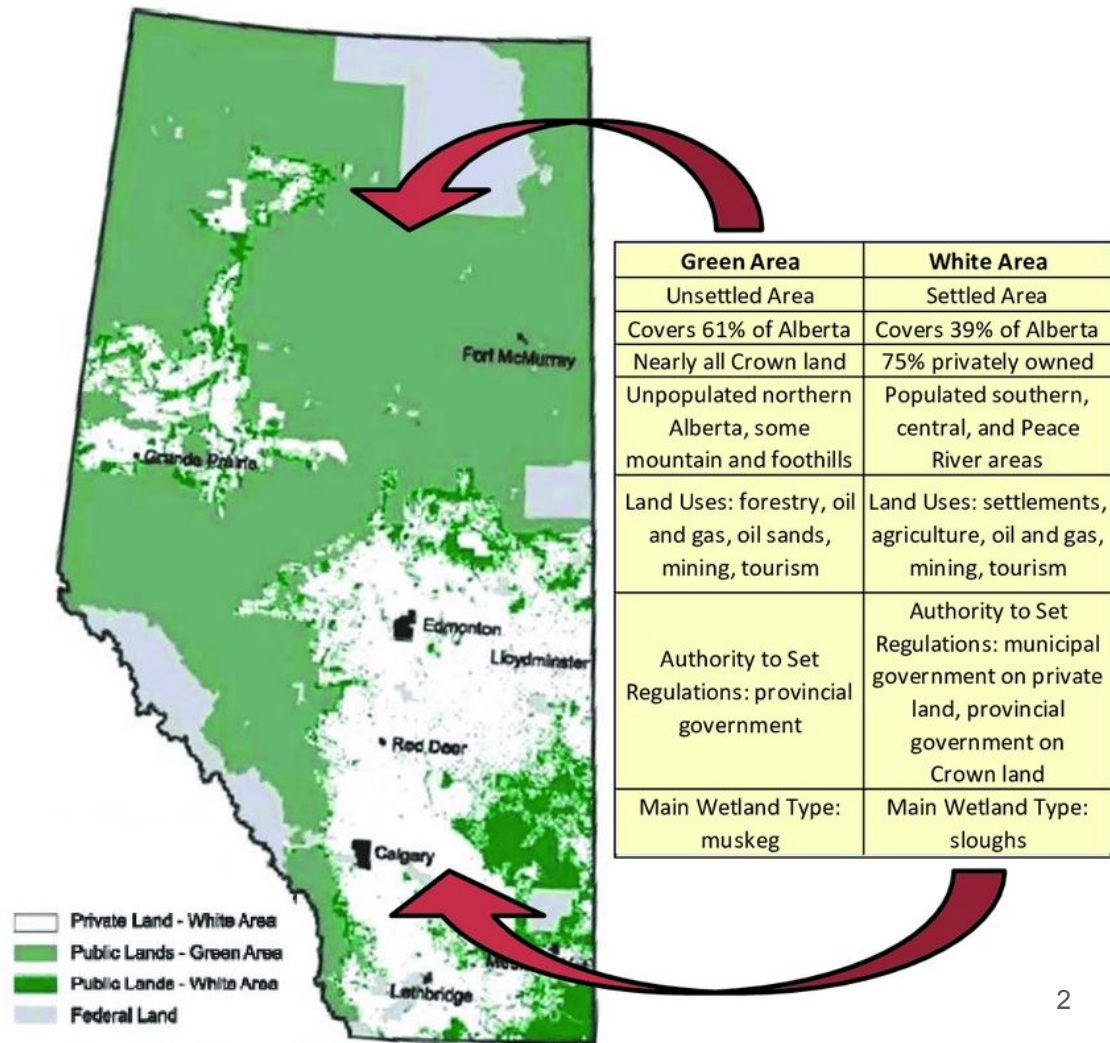


**Stewards of Alberta's Protected
Areas Association (SAPAA)**

Land Ownership in Alberta

(Source: WETLANDS, LAND USE, AND POLICY: ALBERTA'S KEYSTONE ECOSYSTEM AT A CROSSROADS, March 2011, Authors: David A. Locky MacEwan University)

Tragedy of the commons: if many people enjoy unfettered access to a finite, valuable resource they will tend to overuse it and destroy its value.



HELLO
my name is

WAERNAHR

The WAERNAHR Act identifies 4
different protected areas in Alberta.



Province of Alberta

**WILDERNESS AREAS, ECOLOGICAL
RESERVES, NATURAL AREAS AND
HERITAGE RANGELANDS ACT**

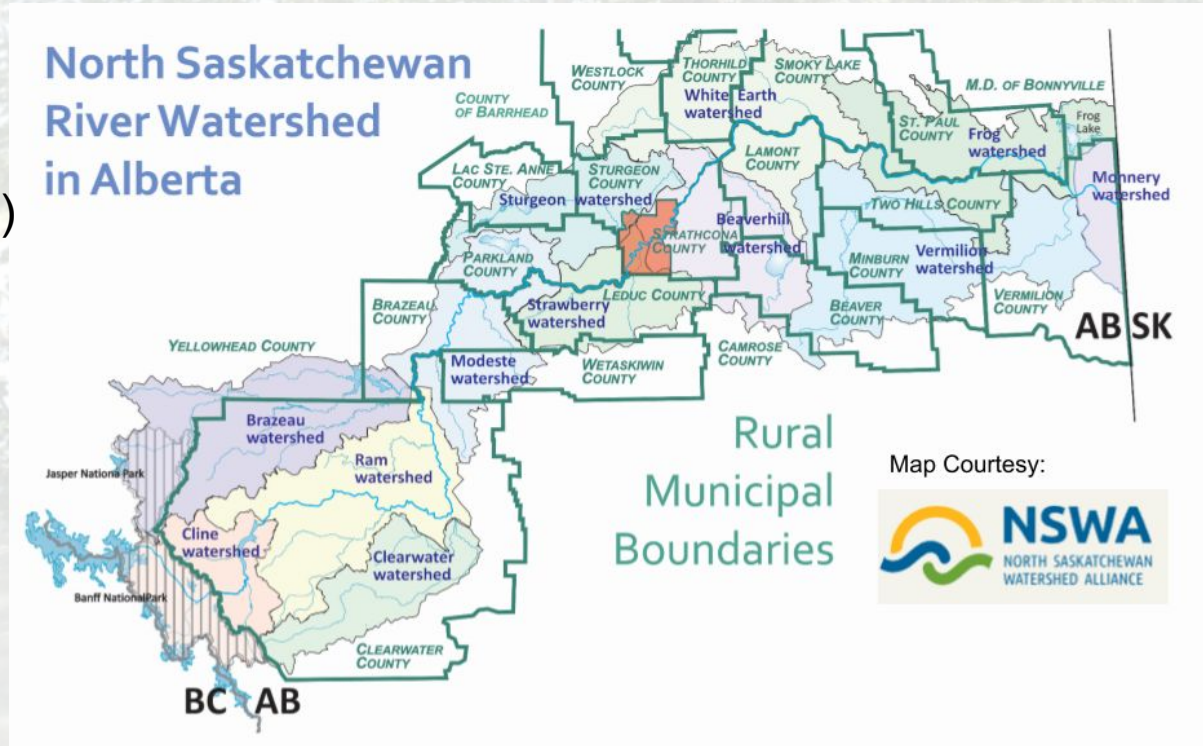
Revised Statutes of Alberta 2000
Chapter W-9

Current as of December 15, 2022

Wildland Areas (3),
Ecological Reserves (15),
Natural Areas (255) and
Heritage Rangelands (2)

Estimated 100+ WAERNAHR Sites in Watershed

- Beaver County (4)
- Bonnyville MD (1)
- Brazeau County (10)
- Clearwater County (24)
- Lac St. Anne County (12)
- Lamont County (2)
- Leduc County (7)
- Parkland County (8)
- St. Paul County (1)
- Smoky Lake County (5)
- Sturgeon County (2)
- Thorhild County (7)
- Vermillion County (2)
- Wetaskiwin County (8)
- Yellowhead County (9)



What Does SAPAA Do?

The Stewards of Alberta's Protected Areas Association of Alberta (SAPAA):

- Structure Site Inspections
- Education and Information on the sites
- Field trips and Training for 'Outdoor-Literacy'
- Reports to the Province & Public state of WAERNAHR
- Supports peer organizations

How Can SAPAA Help You?

Benefit of Visiting a WAERNAHR Site or Working with SAPAA:

- Identify nearby, accessible, or biologically interesting destinations
- Structure method to visit a site aligned with your program
- Webinars for nonprofit/environmental organizations
- Increased visibility to the province

How Can SAPAA Help Your Organization Create a Better Public or Member Experience?

A person wearing a hat and a backpack is crouching in a lush green forest near a river. The scene is bright and sunny, with dense foliage and tall trees. The river flows from the left towards the center of the frame. The overall atmosphere is peaceful and natural.

Thank YOU!